

STERIVALVE®



...providing the perfect mix



Duquessa d'Orleans, 46 B-3
Barcelona 08034
Tel.: +34 93 322 06 36
Fax: +34 93 441 65 90
info@tiselab.com
www.tiselab.com



STERIVALVE®

STERIDOSE PHARMACEUTICAL PRODUCTS

Steridose providing the perfect mix

The Sterivalve range provides high performance flow control for pharmaceutical and biopharmaceutical liquid processes. Using a hydrodynamically optimized design, the Sterivalve combines the best features of a piston valve with the inherent cleanability of a flat diaphragm valve. This combination of features ensures that the Sterivalve offers the unique combination of low flow resistance together with a proven hygienic design. The Sterivalve is made from durable materials with a robust construction, which combined assure a long service life under demanding conditions.

Hygienic design for biopharmaceutical applications

The Sterivalve has a unique patented design using a configuration in which the valve diaphragm is clamped between the valve body and the actuator. All moving parts in the actuator are completely isolated from contact with the process fluid and tools are not required for disassembly or service for most valve sizes. All materials of construction conform to FDA and cGMP requirements. Both the valve housing and the piping connections are self draining without dead-legs. By specifying the Sterivalve, the total number of valves in a system may be reduced by up to 30% in comparison with traditional flat diaphragm valves. This will result in a reduction in hold up volume of the complete piping system.

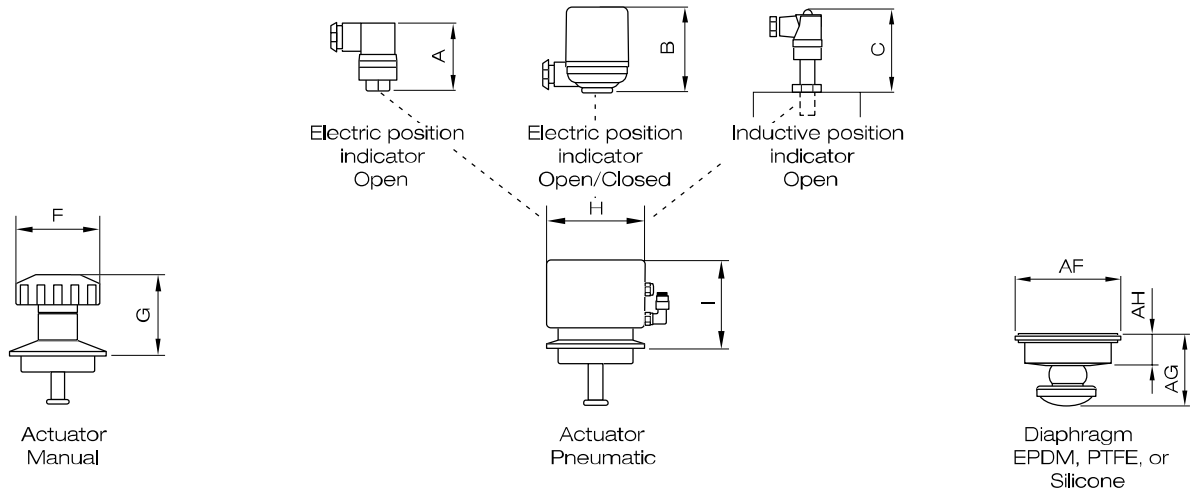
CIP and SIP performance

The Sterivalve has been used and validated in a wide range of clean and sterile processes worldwide. The design of the housing, which features a low residual internal volume, ensures optimal velocity of cleaning agents during the CIP process. The self-draining and open internal structure of the valve housing also ensure safe and reproducible CIP and SIP performance; thus avoiding the risk of bacterial and endotoxin contamination, or undesirable temperature gradients. It is also possible to clean and sterilize both the inlet and outlet pathways of the Sterivalve in the closed position if required. These features enable the process engineer to design an efficient piping system with optimized and risk-free product flow.

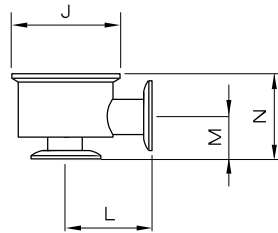
Total quality concept

The manufacturing of Sterivalve is quality assured and certified in accordance with ISO 9001 and benefits from our extensive experience within the pharmaceutical industry.

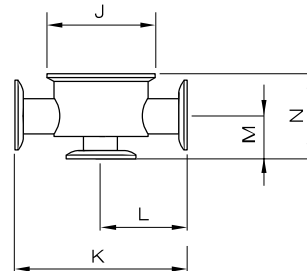
Principal Drawing



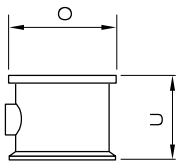
Housings



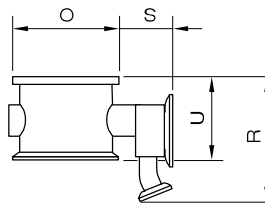
Valve Housing 90°, TC



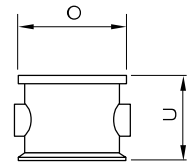
Valve housing Flow through, TC



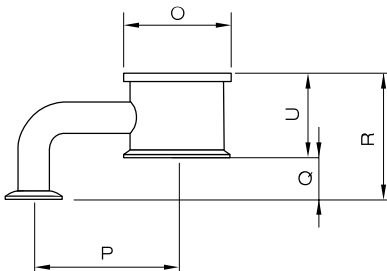
Valve housing *BOV single, weld nose



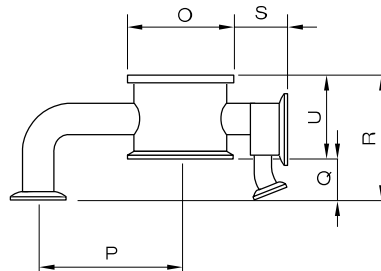
Valve housing *BOV with 1/2" steam valve, weld nose



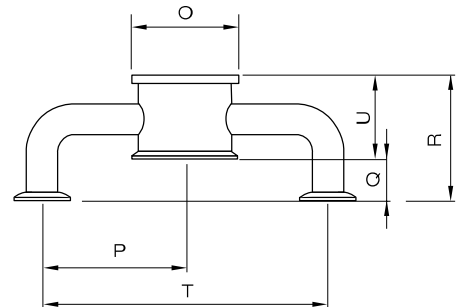
Valve housing *BOV double, weld nose



Valve housing *BOV single, TC



Valve housing *BOV with 1/2" steam valve, TC



Valve housing *BOV double, TC

Other housings available on request

*) BOV= Tank Bottom Outlet Valve

Technical Information

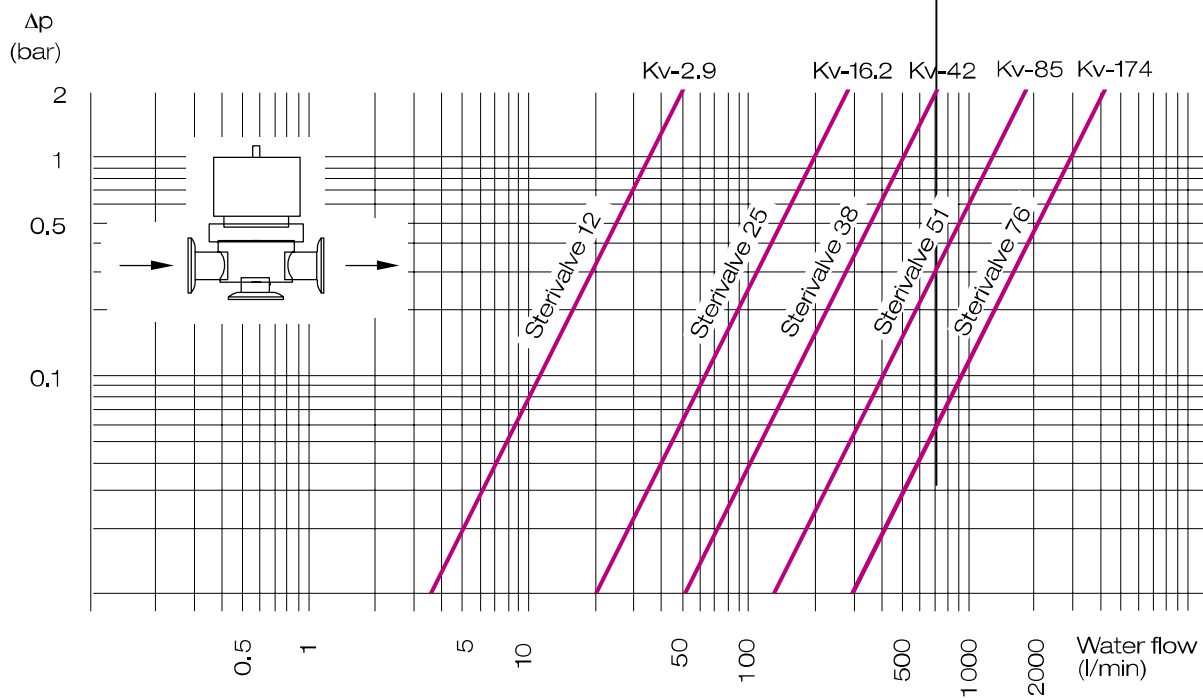
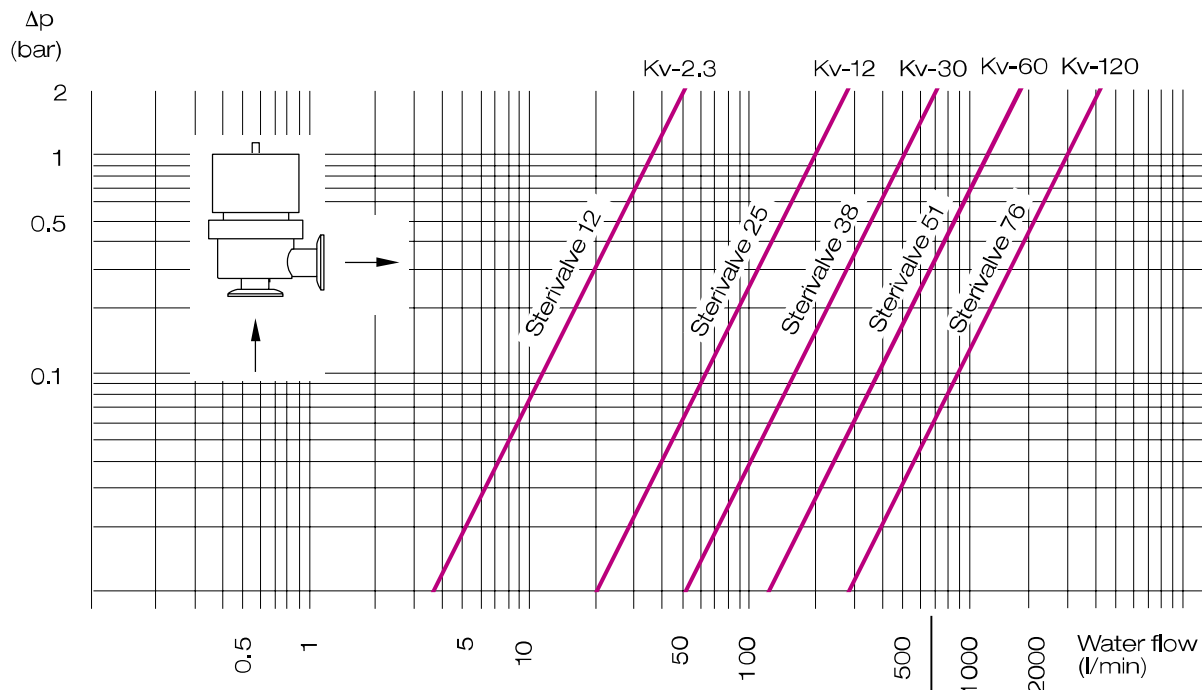
			12 (1/2")	25 (1")	38 (1 1/2")	51 (2")	76 (3")
Electrical position indicator	Open		69	56	57	-	-
	Open/closed		68	68	68	105	105
Inductive position indicator	Open		69	56	57	-	-
Actuator	Manual	F	Ø55	Ø63	Ø63	Ø100	Ø100
		G	45-56	65-72	64-74	109	131
	Pneumatic S/A or A/A ⁺	H	Ø42	Ø77.5	Ø94.5	Ø126	Ø189
		I	60	69	90	219	253
Housing Stainless steel product-contact surfaces are AISI 316L, crevice-free and polished to Ra<=0.5µm. Electro polish finish is optional.		J	TC50,5	TC77,5	TC77,5	Ø110	Ø134
		K	88	118	118	176	180
		L	44	59	59	74	90
		M	27	34	41	58	71
		N	43	63	71	94	120
		O	48	79	84	115	148
		P	58	90	105	140	191
		Q	24	22	49	70	95
		R	58	79	114	149	205
		S	-	43,5	39,5	-	-
		T	116	180	210	280	382
		U	34	57	65	79	110
Diaphragm	Silicone EPDM PTFE	AF	Ø50,5	Ø77,5	Ø77,5	75	89
		AG	31	50	57	60	77
		AH	13,5	20,5	15	5	5
Connection			TC25,4	TC50,5	TC50,5	TC64	TC91
Pipe	Standard dimensions		Ø12,7 x 1,65	Ø25,4 x 1,65	Ø38,1 x 1,65	Ø50,8 x 1,65	Ø76,2 x 1,65

Standard pipe dimensions in accordance to ASTM A270 Table 2

(Other pipe dimensions on request)

⁺) S/A: Spring close / Air open
A/A: Air close / Air open

Flow Pressure Drop Characteristics (ref. water)





STERIDOSE SALES

Head Office: Himmelsbodavägen 7
P.O.Box 120 · SE-147 22 TUMBA · SWEDEN
Phone: +46-8 449 99 00 · Fax: +46-8 449 99 90
info@steridose.com · www.steridose.com

Regional Office: 5020 World Dairy Drive · Madison, WI 53718 · USA
Phone: +1-608 229 5225 · Fax: +1-608 227 9599
info@steridose.com · www.steridose.com



Duquessa d'Orleans, 46 B-3
Barcelona 08034
Tel.: +34 93 322 06 36
Fax: +34 93 441 65 90
info@tiselab.com
www.tiselab.com