

# STERIFLANGE®



*...the original  
flush TC connector*



Duquessa d'Orleans, 46 B-3  
Barcelona 08034  
Tel.: +34 93 322 06 36  
Fax: +34 93 441 65 90  
[info@tiselab.com](mailto:info@tiselab.com)  
[www.tiselab.com](http://www.tiselab.com)



# STERIFLANGE®

## STERIDOSE PHARMACEUTICAL PRODUCTS

### Function

Steriflange is an aseptic mounting flange for all types of equipment mounted to vessels such as temperature transmitters, level transmitters and sample-valves with clamp connections. It gives superior CIP/SIP (Cleaning In Place/Sterilisation In Place) performance and allows equipment to be flush mounted on top, bottom and side of a vessel.

### Design

The locking ring consists of two parts, in order to obtain double safety and facilitate mounting of the equipment. Steriflange is supplied as a complete unit and is welded to the vessel. It is manufactured in AISI 316L stainless steel. Other materials are available upon request. Steriflange is available in different sizes and connection standards.

### Technical data

Product contact surfaces are finished to  $Ra < 0.5\mu\text{m}$  or better.

Traceability-certificates according to EN 10204 (3.1B) are always supplied with Steriflange as standard. Gasket can be supplied in accordance with FDA regulations, and are also available in compliance with USP <88> Class VI.

### Features

- Eliminates dead legs.
- Easy to clean/sterilise vessel equipment.
- No ferrules or threads.
- No air pockets during sterilisation.
- Flexible flanging for different equipment.
- Secured CIP/SIP procedure.
- The mounting plate is designed to be welded to the vessel.

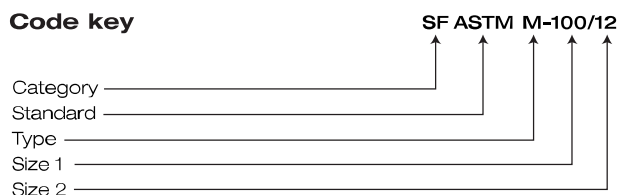
## Principal Drawing

### Example:

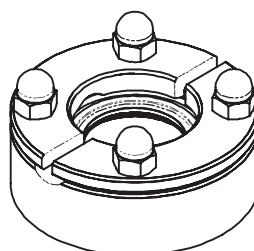
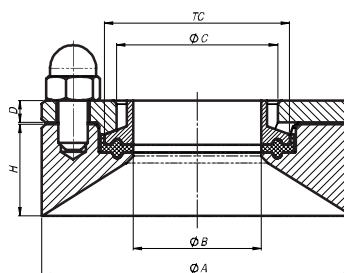
A standard Steriflange 1" ASTM Metric for the Sterisample will have the following code: SF ASTM M-100/12.

TC gasket available in EPDM and silicone.

### Code key



<b>Category:</b> SF (Steriflange)	<b>Type:</b>	M	(Metric)
		I	(Inch)
<b>Standard:</b> ASTM	<b>Size 1 (Width):</b>	38	( $\frac{3}{8}$ " )
SMS		50	( $\frac{1}{2}$ " )
DIN		75	( $\frac{3}{4}$ " )
ISO		100	(1" )
		150	(1 $\frac{1}{2}$ " )
		200	(2" )
		250	(2 $\frac{1}{2}$ " )
		300	(3" )
		400	(4" )
	<b>Size 2 (Height):</b>	12 mm	
		25 mm	
		38 mm	
		51 mm	



# Technical Information

## STERIFLANGE

According to Tube standard ASTM A270 (mm)

## PART NUMBER

Name	Tube	Dimensions						Studs	Material (Weld ring)			
		A	B	C	D	TC	AISI 316L (STANDARD)					
							Height (H) and Art.No.					
							12		25	38	51	
SF ASTM M-38	9,5	54,5	7,7	20	6	25	4x M6x20	107807	107816	107825	107834	
SF ASTM M-50	12,7	54,5	9,4	20	6	25	4x M6x20	107808	107817	107826	107835	
SF ASTM M-75	19,1	54,5	15,7	20	6	25	4x M6x20	107809	107818	107827	107836	
SF ASTM M-100	25,4	84,5	22,1	43,8	6	50,5	4x M8x20	107810	107819	107828	107837	
SF ASTM M-150	38,1	84,5	34,8	43,8	6	50,5	4x M8x20	107811	107820	107829	107838	
SF ASTM M-200	50,8	99,5	47,5	55	6	64	4x M8x20	107812	107821	107830	107839	
SF ASTM M-250	63,5	112	60,2	65,5	10	77,5	4x M8x25	107813	107822	107831	107840	
SF ASTM M-300	76,2	131	72,9	78	10	91	6x M8x25	107814	107823	107832	107841	
SF ASTM M-400	101,6	169,5	97,4	105	10	119	8x M8x25	107815	107824	107833	107842	

Complete name = Name/H, ex: SF ASTM M-38/12

## STERIFLANGE

According to Tube standard ASTM A270 (inch)

## PART NUMBER

Name	Tube	Dimensions						Studs	Material (Weld ring)			
		A	B	C	D	TC	AISI 316L (STANDARD)					
							Height (H) and Art.No.					
							1/2" (12)		1" (25)	1 1/2" (38)	2" (51)	
SF ASTM I-38	3/8"	2,15	0,30	0,79	0,24	1"	4x 1/4"x3/4"	107771	107780	107789	107798	
SF ASTM I-50	1/2"	2,15	0,37	0,79	0,24	1"	4x 1/4"x3/4"	107772	107781	107790	107799	
SF ASTM I-75	3/4"	2,15	0,62	0,79	0,24	1"	4x 1/4"x3/4"	107773	107782	107791	107800	
SF ASTM I-100	1"	3,33	0,87	1,72	0,24	2"	4x 5/16"x3/4"	107774	107783	107792	107801	
SF ASTM I-150	1 1/2"	3,33	1,37	1,72	0,24	2"	4x 5/16"x3/4"	107775	107784	107793	107802	
SF ASTM I-200	2"	3,92	1,87	2,17	0,24	2 1/2"	4x 5/16"x3/4"	107776	107785	107794	107803	
SF ASTM I-250	2 1/2"	4,41	2,37	2,58	0,39	3"	4x 5/16"x1"	107777	107786	107795	107804	
SF ASTM I-300	3"	5,16	2,87	3,07	0,39	3 5/8"	6x 5/16"x1"	107778	107787	107796	107805	
SF ASTM I-400	4"	6,67	3,83	4,13	0,39	4 5/8"	8x 5/16"x1"	107779	107788	107797	107806	

Complete name = Name/H, ex: SF ASTM I-38/12

## STERIFLANGE

According to Tube standard SMS 3008 (mm)

## PART NUMBER

Name	Tube	Dimensions						Studs	Material (Weld ring)			
		A	B	C	D	TC	AISI 316L (STANDARD)					
							Height (H) and Art.No.					
							12		25	38	51	
SF SMS 12	12	54,5	10	20	6	25	4x M6x20	107609	107617	107625	107633	
SF SMS 18	18	54,5	15	20	6	25	4x M6x20	107610	107618	107626	107634	
SF SMS 25	25	84,5	22,6	43,8	6	50,5	4x M8x20	107611	107619	107627	107635	
SF SMS 38	38	84,5	35,6	43,8	6	50,5	4x M8x20	107612	107620	107628	107636	
SF SMS 51	51	99,5	48,6	55	6	64	4x M8x20	107613	107621	107629	107637	
SF SMS 64	63,5	112	60,3	65,5	10	77,5	4x M8x25	107614	107622	107630	107638	
SF SMS 76	76,1	131	72,9	78	10	91	6x M8x25	107615	107623	107631	107639	
SF SMS 100	101,6	169,5	97,6	105	10	119	8x M8x25	107616	107624	107632	107640	

Complete name = Name/H, ex: SF SMS 12/12

# Technical Information

## STERIFLANGE

According to Tube standard DIN 11850 Series 1-3 (mm)

## PART NUMBER

Name	Tube	Dimensions						Material (Weld ring)			
		A	B	C	D	TC	Studs	AISI 316 (STANDARD)			
								Height (H) and Art.No.			
								12	25	38	51
SF DIN 10	12-14	69,5	10	23,5	6	34	4x M8x20	107681	107691	107701	107711
SF DIN 16	18-20	69,5	16	23,5	6	34	4x M8x20	107682	107692	107702	107712
SF DIN 20	22-24	69,5	20	23,5	6	34	4x M8x20	107683	107693	107703	107713
SF DIN 25	28-30	84,5	26	43,8	6	50,5	4x M8x20	107684	107694	107704	107714
SF DIN 32	34-36	84,5	32	43,8	6	50,5	4x M8x20	107685	107695	107705	107715
SF DIN 40	40-42	84,5	38	43,8	6	50,5	4x M8x20	107686	107696	107706	107716
SF DIN 50	52-54	99,5	50	55	6	64	4x M8x20	107687	107697	107707	107717
SF DIN 65	70	131	66	78	10	91	6x M8x25	107688	107698	107708	107718
SF DIN 80	85	146	81	93	10	106	6x M8x25	107689	107699	107709	107719
SF DIN 100	104	169,5	100	105	10	119	8x M8x25	107690	107700	107710	107720

Complete name = Name/H, ex: SF DIN 10/12

## STERIFLANGE

According to Tube standard ISO 1127 Series 1 (mm)

## PART NUMBER

Name	Tube	Dimensions						Material (Weld ring)			
		A	B	C	D	TC	Studs	AISI 316L (STANDARD)			
								Height (H) and Art.No.			
								12	25	38	51
SF ISO 8	13,5	54,5	10,2	20	6	25	4x M6x20	107924	107935	107946	107957
SF ISO 10	17,2	69,5	14	23,5	6	34	4x M8x20	107925	107936	107947	107958
SF ISO 15	21,3	69,5	18,1	23,5	6	34	4x M8x20	107926	107937	107948	107959
SF ISO 20	26,9	84,5	23,7	43,8	6	50,5	4x M8x20	107927	107938	107949	107960
SF ISO 25	33,7	84,5	29,7	43,8	6	50,5	4x M8x20	107928	107939	107950	107961
SF ISO 32	42,4	99,5	38,4	55	6	64	4x M8x20	107929	107940	107951	107962
SF ISO 40	48,3	99,5	44,3	55	6	64	4x M8x20	107930	107941	107952	107963
SF ISO 50	60,3	112	56,3	65,5	10	77,5	4x M8x25	107931	107942	107953	107964
SF ISO 65	76,1	131	71,5	78	10	91	6x M8x25	107932	107943	107954	107965
SF ISO 80	88,9	146	84,3	93	10	106	6x M8x25	107933	107944	107955	107966
SF ISO 100	114,3	159,5	109,7	117	10	130	8x M8x25	107934	107945	107956	107967

Complete name = Name/H, ex: SF ISO 8/12

# STERIFLANGE®

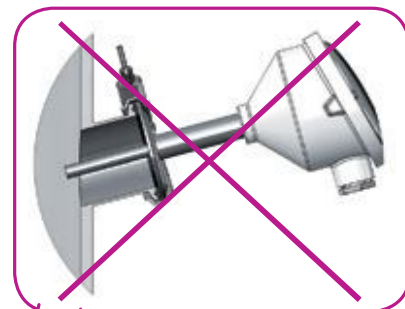
STERIDOSE PHARMACEUTICAL PRODUCTS

## Our mission - your aseptic success

Steriflange is an aseptic mounting flange for all types of equipment. It gives superior CIP/SIP, (Clean In Place/Sterilisation In Place).



**Steriflange®**  
Flush mounted  
instrument.

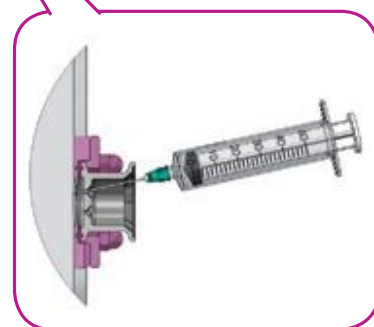
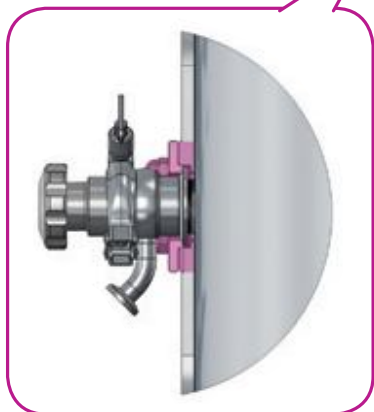


Traditional Triclamper  
connectors are hard to  
clean by spray ball



**Steriflange®**  
Flush mounted  
sampling valve.  
Sterivalve®

**Steriflange®**  
Flush mounted  
sampling system.  
Sterisample®





**STERIDOSE SALES**

**Head Office:** Himmelsbodavägen 7  
P.O.Box 120 · SE-147 22 TUMBA · SWEDEN  
Phone: +46-8 449 99 00 · Fax: +46-8 449 99 90  
info@steridose.com · www.steridose.com

**Regional Office:** 5020 World Dairy Drive · Madison, WI 53718 · USA  
Phone: +1-608 229 5225 · Fax: +1-608 227 9599  
info@steridose.com · www.steridose.com



Duquessa d'Orleans, 46 B-3  
Barcelona 08034  
Tel.: +34 93 322 06 36  
Fax: +34 93 441 65 90  
info@tiselab.com  
www.tiselab.com