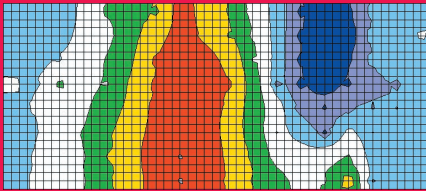


# Lethality Mapper™

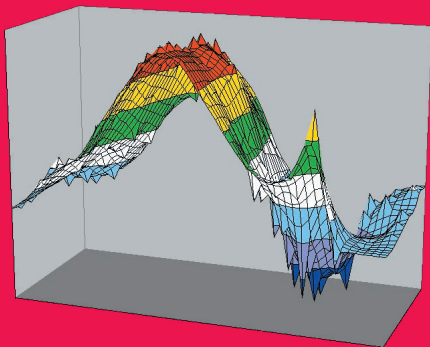
Add-In for Microsoft Excel

## SOFTWARE FEATURES:

- Creates customizable 2D and 3D lethality charts from thermo-couple or Fo data.
- Easily-read charts speed up validation and help to effectively communicate validation efforts with management.
- Simple to use. Very little operator training required.
- Charts can be created from data entered into any Excel spreadsheet.



2D lethality chart.



3D lethality chart.

## REQUIREMENTS:

- Microsoft Windows 2000/XP.
- Microsoft Excel 97 or higher.

The Lethality Mapper™ Excel Add-in from SGM Biotech, Inc. is a tool that allows validation engineers to visually determine the “least lethal” or “slowest to heat” locations in a sterilizer load.

Using Lethality Mapper, an engineer can easily create colorful, customizable 2D and 3D charts from Fo data entered directly into any Microsoft Excel spreadsheet. The resulting charts visually communicate the lethality characteristics of a sterilizer chamber, making it easy to determine where biological indicator spore challenges should be placed.



To learn more about Lethality Mapper and to try the full-functional demo, visit our website!

[http://www.sgmbiotech.com/products/lethality\\_mapper.htm](http://www.sgmbiotech.com/products/lethality_mapper.htm)

*SGM Biotech, Inc. is the only company in the world dedicated solely to the production and evolution of biological indicators. We offer a full line of high quality indicators and provide a number of related services and validation tools. Our knowledgeable and supportive staff is standing by to answer all of your questions.*

**SGM BIOTECH, INC.**

10 Evergreen Drive, Suite E  
Bozeman, MT 59715 USA  
info@sgmbiotech.com

Copyright 2004, SGM Biotech, Inc. All rights reserved. Windows and Excel are registered trademarks of the Microsoft Corporation.



Albareda, 6-8 entlo.  
Barcelona 08004  
Tel.: +34 93 322 06 36  
Fax: +34 93 441 65 90  
info@tiselab.com  
www.tiselab.com